

Access Statement For Willow Barn, Holt, Nr Bradford on Avon

Willow Barn is a self catering barn situated down a private drive off the B3107 between Bradford on Avon and Lacock. The barn is designed over two floors with two staircases, oak beams and vaulted ceilings.

Pre-Arrival

Our website is www.holidaybarn.co.uk

For bookings/enquiries you can contact us by phone 01225 782314, mobile 07855 464975 or email booking@holidaybarn.co.uk

The nearest railway stations are Bath (10 miles), Chippenham (7.5 miles), Westbury (6.5 miles), Frome (10 miles), Trowbridge (3 miles) and Bradford on Avon (3miles).

Taxis are available at all stations.

These are local taxi services: ABT Taxis01225 353637
A&P Taxis.....01225 706133

Arrival & Car Parking Facilities

The barn is available from 4pm on day of arrival.
Keys will be provided on arrival.

The barn is approached down a tarmac drive (past the sign for OXENLEAZE FARM) a through a double iron gateway, and then through the farmyard.

The car park is levelled concrete and gravel. Parking is outside the barn.

Main Entrance

The entrance door is 1660 mm wide. Threshold step is 150mm high.
There are no handrails.

Kitchen / Dining Area / Lounge / Downstairs Cloakroom / WC

This spacious open plan area is accessed immediately through the front entrance. The floor is laminated with a rug in the lounge area and a rug under the dining room table.

The kitchen is fully fitted as described on website.

The dining area has a round table and four chairs.

The lounge has two sofas, a desk and chair, 32" TV, DVD, and wood burning stove -logs provided.

The cloakroom has a WC and hand basin.

Stairs

First staircase (stair width 750mm) leads to the first floor bedroom with ensuite bathroom.

Bedroom 1

(3400 x 3300mm) has a 4ft 6" double bed, 20" TV with Freeview /DVD.

Non feather pillows and duvet, cotton bedding provided.

Vaulted ceiling and Velux roof window and small window.

The stairs and bedroom floor are carpeted.

The ensuite bathroom has a shower over the bath and a glass shower screen, wc and built in sink/vanity unit. Tiled wall and floor, heated towel rail, shaver point, electric ventilation.

Vaulted ceiling.

Second staircase (stair width 750 mm) leads to the first floor and another double bedroom, also with ensuite bathroom.

Bedroom 2

(3400 x 3300mm) has a 6ft zip and link bed - this could be two 3ft single beds if requested. 20"TV with Freeview/DVD.

Non feather pillows and duvets, cotton bedding provided.

Vaulted ceiling and Velux roof window.

The stairs and bedroom floor are carpeted.

This ensuite bathroom has a bath with a handheld spray, wc and built in sink/vanity unit.

Tiled wall and floor, heated towel rail, shaver point, and electric ventilation. Vaulted ceiling.

More information/photo's can be found on the website or phone/email for more information.

Laundry

There is a standard size front loading washing machine/tumble dryer in the kitchen.

Shops

The village shop/newsagent is very well stocked and is about 1 mile away. The post office is also about 1 mile away. There are supermarkets such as Sainsburys in Bradford on Avon(2 miles) and Melksham (2 miles) , Tesco and Asda in Trowbridge (3 miles) to name a few.

Outdoor Facilities

Patio furniture – table, four chairs and umbrella, and BBQ provided.

Tennis by arrangement – please bring your own racquets and balls, and please wear non marking tennis shoes.

Additional Information

There is a NO SMOKING policy in the barn.

Sorry- we do not take children or pets

The barn does not have a phone line.

Mobile phone reception is good and Wi Fi is available.

CONTACT INFORMATION

Marusia Collins

*Address: WILLOW BARN,
Oxenleaze Farm,
Holt
Bradford on Avon
Wilts. BA14 6 QT*

Tel: 01225 782314 or Mob:07855 464 975

email booking@holidaybarn.co.uk

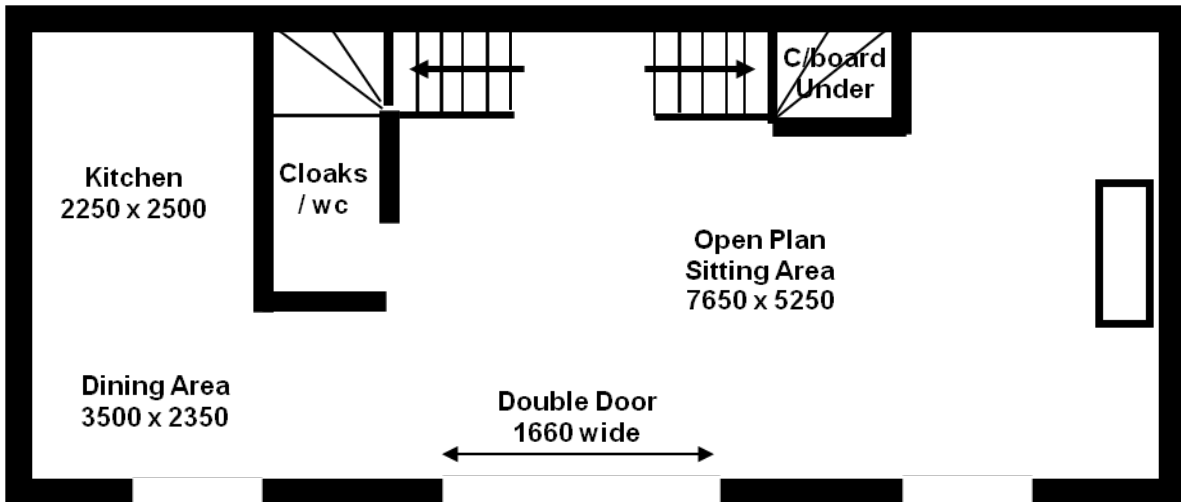
Website: www.holidaybarn.co.uk

Emergency number: 07855464975

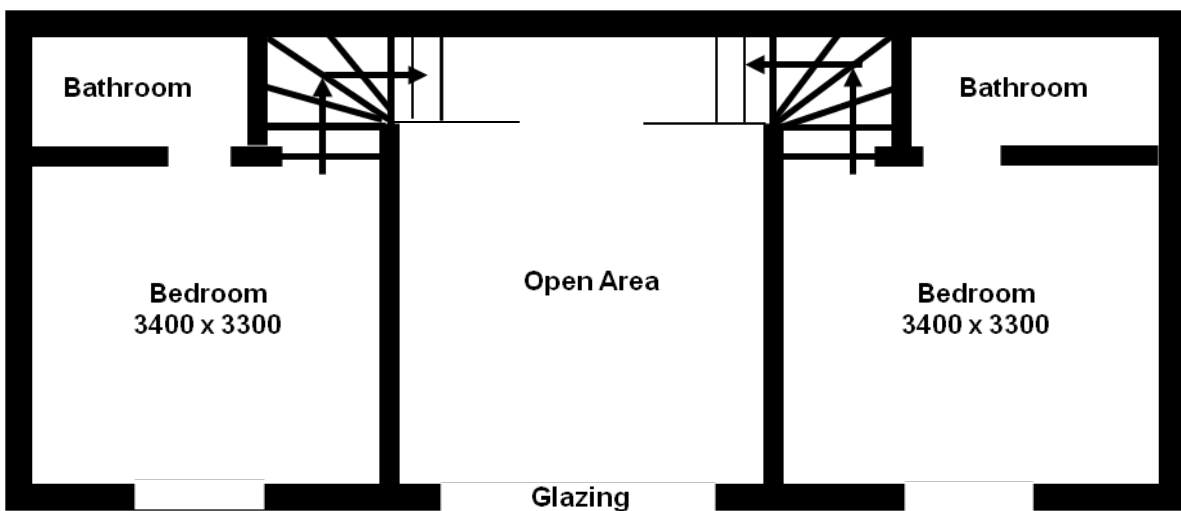
We welcome your feedback to help us continuously improve, if you have any comments please contact us on the numbers above.

Access Statement Diagram on the next page...

Willow Barn Access Statement Diagram



Ground Floor



First Floor

All dimensions approximate (mm)

Main Entrance : Step Height 150

Stair Width : 750